

# Cavitation Cleaning



## CW200 Short Cavitation Cleaning Gun

- Maximum pressure: 300 bar (4,350 psi)
- Reaction force: Max. 90 N
- Maximum flow: 28 LPM (7.5 GPM)
- Lance length: 230mm (9")
- Weight: 1100g (2.4lbs)
- Weight under water: 600g (1.3lbs)



## CW250 Short Zero Thrust Cavitation Cleaning Gun

- Maximum pressure: 300 bar (4,350 psi)
- Maximum flow: 40 LPM (10.5 GPM)
- Weight: 1800g (4lbs)
- Weight under water: 1000g (2.2lbs)
- According: IMCA guidelines



## CW300 Long Cavitation Cleaning Gun

- Maximum pressure: 300 bar (4,350 psi)
- Reaction force: Max. 90 N
- Maximum flow: 28 LPM (7.5 GPM)
- Weight: 1600g (3.5lbs)
- Weight under water: 800g (1.8lbs)
- Certified: SIR- Certified: SIR



## CW350 Zero Thrust Cavitation Cleaning Gun

- Maximum pressure: 300 bar (4,350 psi)
- Maximum flow: 40 LPM (10.5 GPM)
- Weight: 2300g (5lbs)
- Weight under water: 1200g (2.6lbs)
- According: IMCA guidelines
- Certified: SIR



## CW500 Long Cavitation Cleaning Gun

- Maximum pressure: 560 bar (8,122psi)
- Reaction force: Max. 90 Nm
- Maximum flow: 28 LPM (7.5 GPM)
- Weight: 1600g (3.5lbs)
- Weight under water: 800g (1.8lbs)
- Certified: SIR



## CW550 PRO Zero Thrust Cavitation Cleaning Gun

- Maximum pressure: 560 bar (8,122 psi)
- Maximum flow: 80 LPM (21 GPM)
- Weight: 2800g (6.2lbs)
- Weight under water: 1600g (3.5lbs)
- According: IMCA guidelines
- Certified: SIR

Technical Diving Equipment Pomtec BV

Conradweg 22  
4612PD Bergen op Zoom  
The Netherlands

T: +31 164 745500  
F: +31 164 745599

E: sales@pomtec.com  
I: www.pomtec.com



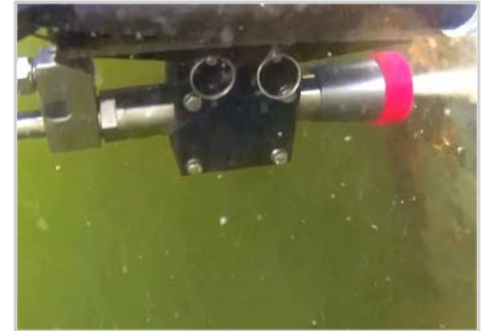
## CW1500 Zero Thrust Cavitation Cleaning Gun

- Maximum pressure: 1500 bar (21,755 psi)
- Maximum flow: 120 LPM (31 GPM)
- Weight: 2500g (5.5lbs)
- Weight under water: 1400g (3.1lbs)
- According: IMCA guidelines
- Certified: SIR



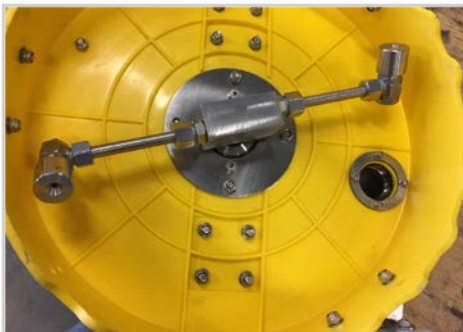
## CW202 ROV Lance

- Lance length 280mm
- Weight 1,8kg (4lbs)
- Weight under water 1kg (2.2lbs)
- Maximum pressure: 500 bar (7,250psi)
- Minimum flow: 28 L/min. (7.5 GPM)
- Maximum flow: 80 L/min. (21 GPM)



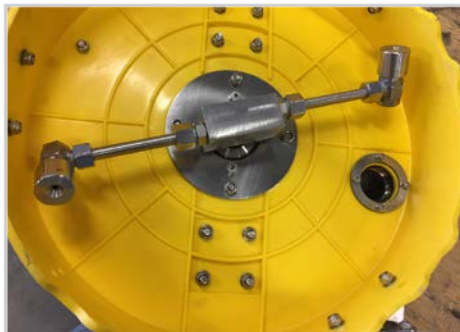
## CW303 ROV Lance

- Lance length 680mm
- Weight 2,3kg (5lbs)
- Weight under water 1,2kg (2.6lbs)
- Maximum pressure: 500 bar (7,250psi)
- Minimum flow: 28 L/min. (7.5 GPM)
- Maximum flow: 80 L/min. (21 GPM)



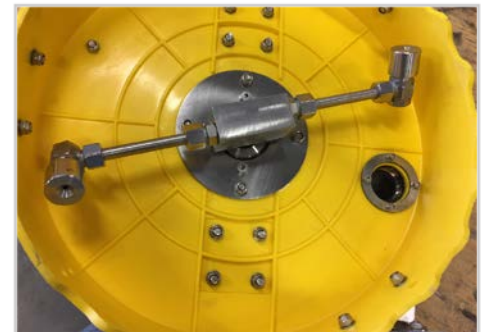
## SR450 Cavitation Rotor Cleaner

- Diameter 450mm (17.7")
- Min. flow 20 LPM (5.3 GPM)
- Max. flow 40 LPM (10.5 GPM)
- Min. pressure: 150bar (2,175psi)
- Max. pressure: 300bar (4,350psi)



## SR600 Cavitation Rotor Cleaner

- Diameter 600mm (23.6")
- Min. flow 20 LPM (5.3 GPM)
- Max. flow 40 LPM (10.5 GPM)
- Min. pressure: 150bar (2,175psi)
- Max. pressure: 300bar (4,350psi)



## SR600\_2D Double Rotor Cleaner

- Diameter 2 x 600 mm (2 x 23.6")
- Min. flow 40 LPM (10.5 GPM)
- Max. flow 80 LPM (21 GPM)
- Min. pressure: 150bar (2,175psi)
- Max. pressure: 300bar (4,350psi)