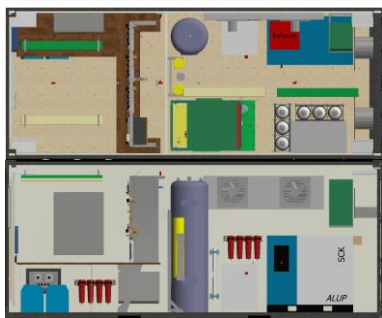
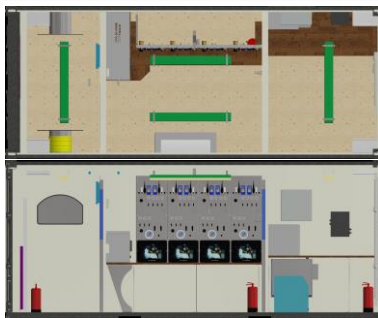


20ft Dive Control Container



AB0001 Nitrox DCR + GAS

20ft ISO or Offshore container
3 diver Nitrox / Air Control Panel
HP & LP compressor
Nitrox Membrane
IMCA compliant (option; build to Class)



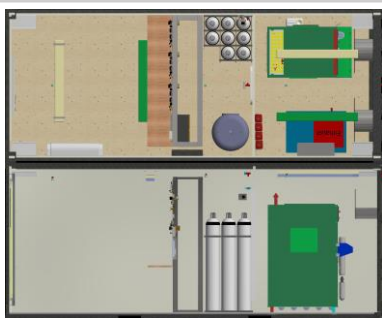
AB0004 DCR + Storage

20ft ISO or Offshore Container
3 diver + Wet Bell Control Panel
Storage & Technician section
IMCA compliant (option; build to Class)



AB0008 DCR + GAS

20ft ISO or Offshore Container
3 diver Control Panel
2x LW HP compressor
6x 140L cylinder HP Air Bank
IMCA compliant (option; build to Class)



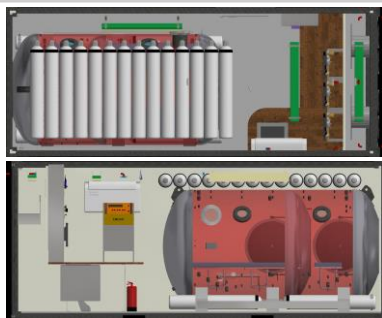
AB0013 DCR + GAS

20ft ISO or Offshore Container
3 diver Control Panel
LP & HP Compressor
LP & HP Gas Bank
IMCA compliant (option; build to Class)



AB0026 DCR + Client

20ft ISO or Offshore Container
3 diver Control Panel
Umbilical storage
Client Room
IMCA compliant (option; build to Class)



AB0030 DCR + DDC1800

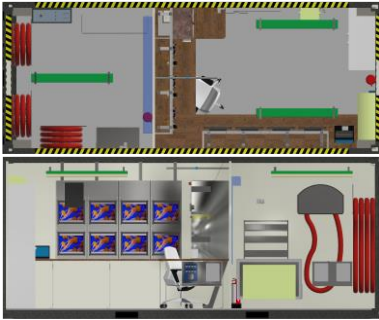
20ft ISO or Offshore Container
3 diver Control Panel
DDC1800 Decompression Chamber
24x 50L Cylinder Air Bank
IMCA compliant (option; build to Class)

Technical Diving Equipment Pomtec BV

Conradweg 22
4612PD Bergen op Zoom
The Netherlands

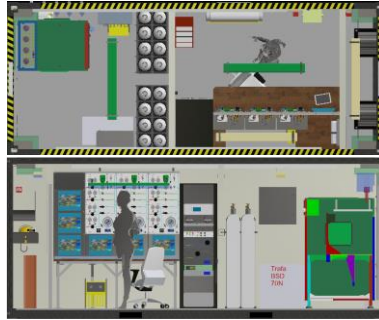
T: +31 164 745500
F: +31 164 745599

E: sales@pomtec.com
I: www.pomtec.com



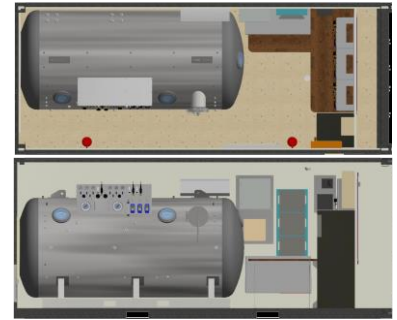
AB0037 DCR + Storage

20ft ISO or Offshore Container
3 diver Control Panel
ROV/Deck monitoring
Storage Room
IMCA compliant (option; build to Class)



MAB0004 DCR + GAS

20ft ISO or Offshore Container
3 diver Control Panel
HP Compressor + Air bank
Umbilical Storage
IMCA compliant (option; build to Class)



MAB0023 DCR + DDC1600

20ft ISO or Offshore Container
3 diver Control Panel
DDC 1600 Decompression Chamber
Umbilical Storage
IMCA compliant (option; build to Class)